

2/2-way valve with PTFE bellows for fluid separation



Type 2080 can be combined with...



Type 6012 P
Pilot valve



Type 8645
Valve island



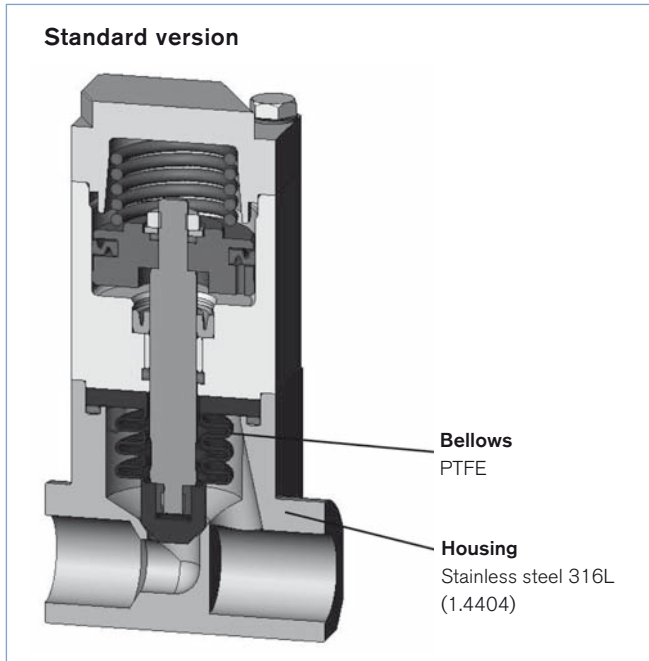
Type 8041
Flow sensor

- High Medium resistance
- Easy to clean for hygienic applications
- Long life
- Easy conversion of the actuator function, CFA/CFB
- Compact
- With stainless steel actuator

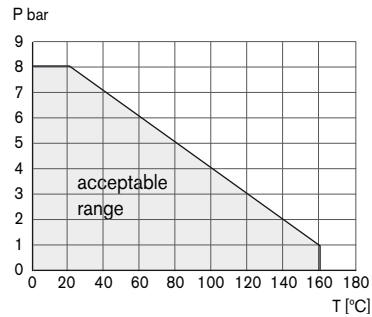
The valve consists of a pneumatically piston actuator with return spring, a stainless steel body and PTFE bellows. The PTFE bellows are used for the separation of the medium. With the appropriate installation (body to bottom) the valve is self-draining. The materials used and the internal contours are simple to clean (CIP and SIP). The valve is suitable for food technology. The modular structure permits configuration with different armatures and customized port connectors. The pneumatic actuator is servo assisted by a pilot valve, a valve block or similar.

Technical data	
Orifice	DN 4 to DN 10
Medium	Neutral to aggressive gases and liquids
Medium pressure range Medium temperature	Vacuum up to 8 bar (see PT-Diagram)
Port connections	Threaded port G 3/8, weld end, flange connection
Pilot air connections	Threaded port G 1/8
Position detection	Reedcontact (two wire, closer), cable length: 3m
Installation	Upright assembly for self-draining (body to bottom)
Body material	Stainless steel 316Ti (1.4571), with flange 316L (1.4404)
Actuator material	Stainless steel 304L (1.4301)
Bellows material	Advanced PTFE
Wetted materials	Stainless steel 316Ti /316L, PTFE
Return pressure	Tight to 8 bar
Pilot air pressure	4.5 to 10 bar
Pilot fluid	Neutral gases, air
Ambient temperature	Max. +90 °C
Surface finish	Surface finish Ra=0.8, others on request
Special features	- With self-draining operation - Suitable for CIP and SIP (cleaning in process) - Suitable for foodstuffs - FDA conform
Flow rate Kv value water [m³/h]	Measured at +20°C, 1 bar Pressure at valve inlet and free outlet
Pressure values [bar]	Overpressure with respect to atmospheric pressure

Material

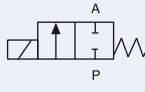
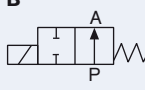


Pressure temperature characteristics



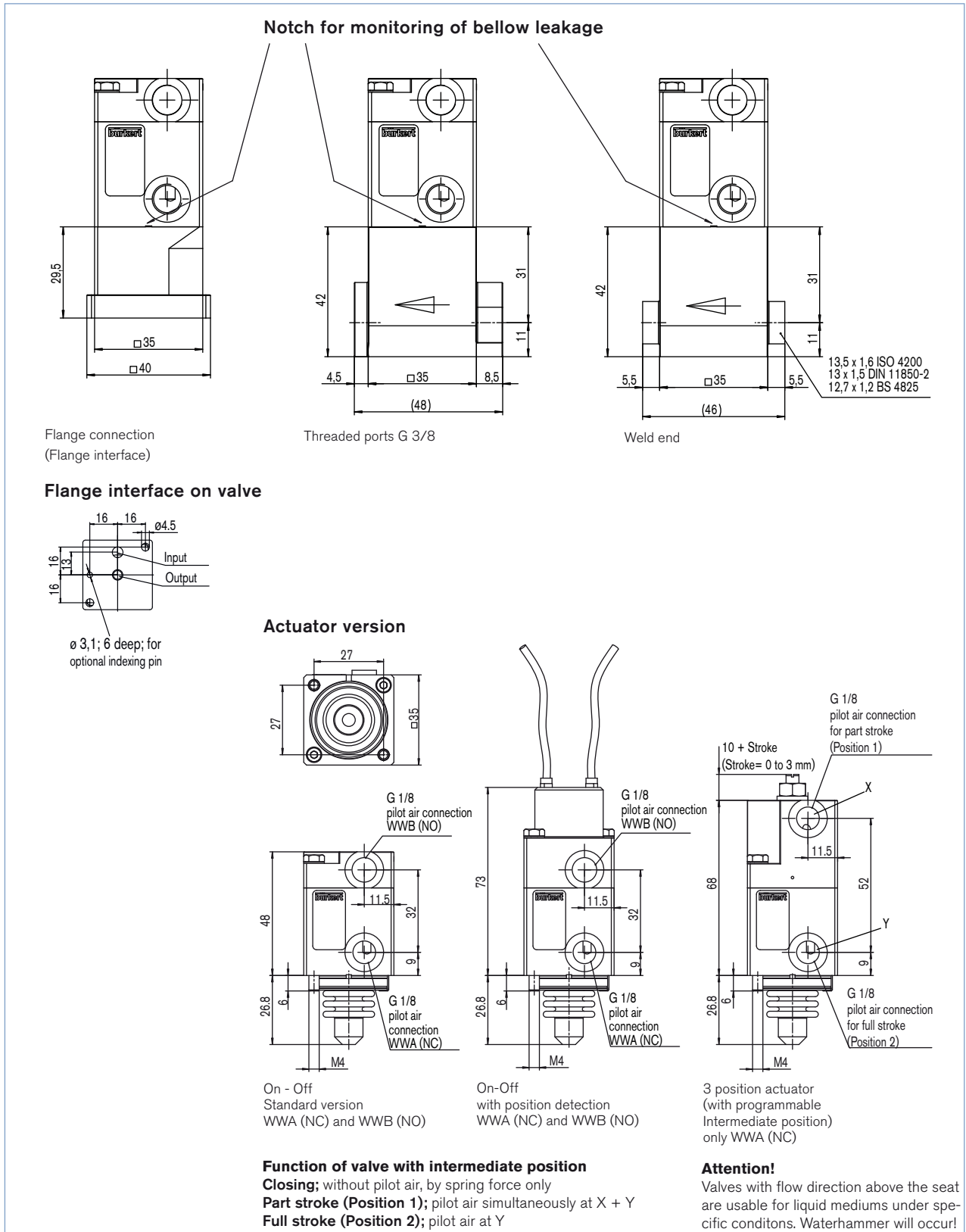
Ordering chart for valves (other versions on request)

All valves with pilot air ports G 1/8 and actuator body in stainless steel

Circuit function	Actuator version	Orifice [mm]	kv value [m ³ /h]	Medium connection	Item no.	
A  2/2-way-valve, (NC) servo assisted, without pilot air closed by spring force, actuated with a pilot valve, valve block or similar	On-Off	10	1.14	Threaded port G 3/8	180 729	
		10	1.14	Weld end acc. to BS 4825 (12.7 x 1.2)	179 582	
		10	1.14	Weld end acc. to ISO 4200 (13.5 x 1.6)	186 407	
		10	1.14	Weld end acc. to DIN 11850-2 (13 x 1.5)	186 409	
		6	0.64	Flange port	182 863	
		–	–	without body (only actuator)	180 555	
	On-Off with position detection	10	1.14	Threaded port G 3/8	186 420	
		10	1.14	Weld end acc. to BS 4825 (12.7 x 1.2)	186 421	
		10	1.14	Weld end acc. to ISO 4200 (13.5 x 1.6)	186 422	
		10	1.14	Weld end acc. to DIN 11850-2 (13 x 1.5)	186 423	
		6	0.64	Flange port	186 424	
		–	–	without body (only actuator)	186 425	
		3-Positions actuator (with intermediate position)	10	1.14	Threaded port G 3/8	186 410
			10	1.14	Weld end acc. to BS 4825 (12.7 x 1.2)	186 411
			10	1.14	Weld end acc. to ISO 4200 (13.5 x 1.6)	186 413
10	1.14		Weld end acc. to DIN 11850-2 (13 x 1.5)	186 414		
6	0.64		Flange port	186 415		
–	–	without body (only actuator)	186 416			
B  2/2-way-valve, (NO) servo assisted, without pilot air closed by spring-force, actuated with a pilot valve, valve block or similar	On-Off	10	1.14	Threaded port G 3/8	186 417	
		10	1.14	Weld end acc. to BS 4825 (12.7 x 1.2)	180 325	
		10	1.14	Weld end acc. to ISO 4200 (13.5 x 1.6)	186 418	
		10	1.14	Weld end acc. to DIN 11850-2 (13 x 1.5)	186 419	
		6	0.64	Flange port	182 864	
		–	–	without body (only actuator)	182 285	
	On-Off with position detection	10	1.14	Threaded port G 3/8	186 428	
		10	1.14	Weld end acc. to BS 4825 (12.7 x 1.2)	186 429	
		10	1.14	Weld end acc. to ISO 4200 (13.5 x 1.6)	186 430	
		10	1.14	Weld end acc. to DIN 11850-2 (13 x 1.5)	186 431	
		6	0.64	Flange port	186 427	
		–	–	without body (only actuator)	186 426	

DTS 1000104889 EN Version: E validé printed: 13.05.2011 Status: RL (released | freigegeben |

Dimensions [mm]



To find your nearest Bürkert facility, click on the orange box → www.burkert.com

In case of special application conditions, please consult for advice.

Subject to alterations
 © Christian Bürkert GmbH & Co. KG

1105/5_EU-en_00895034